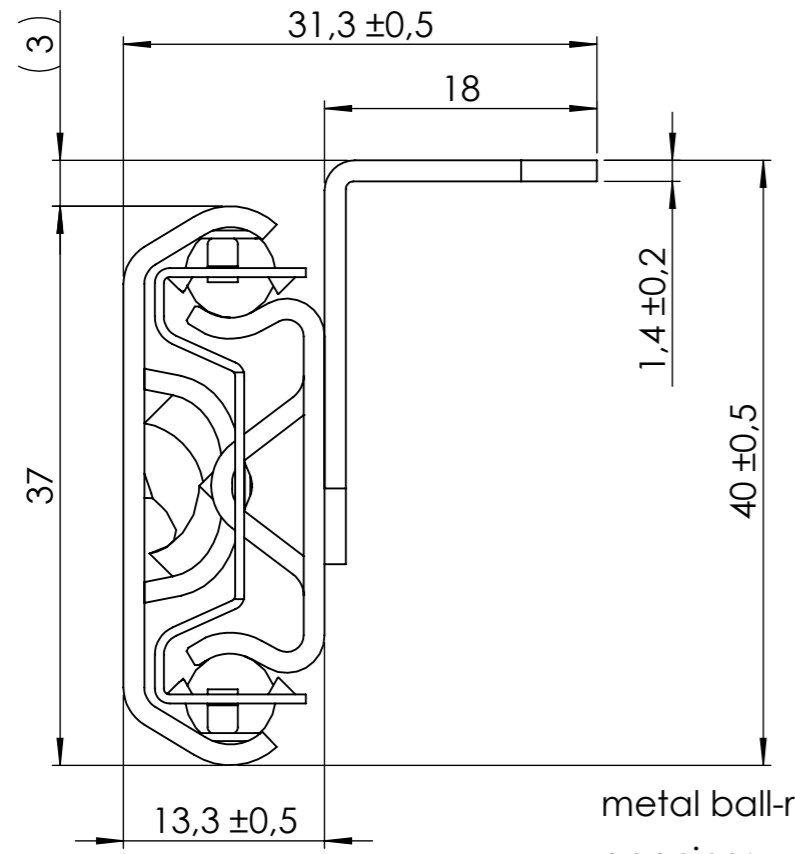
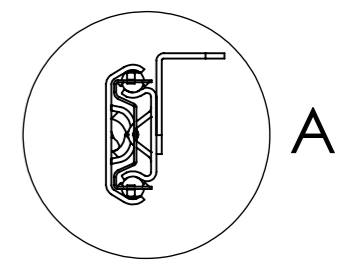
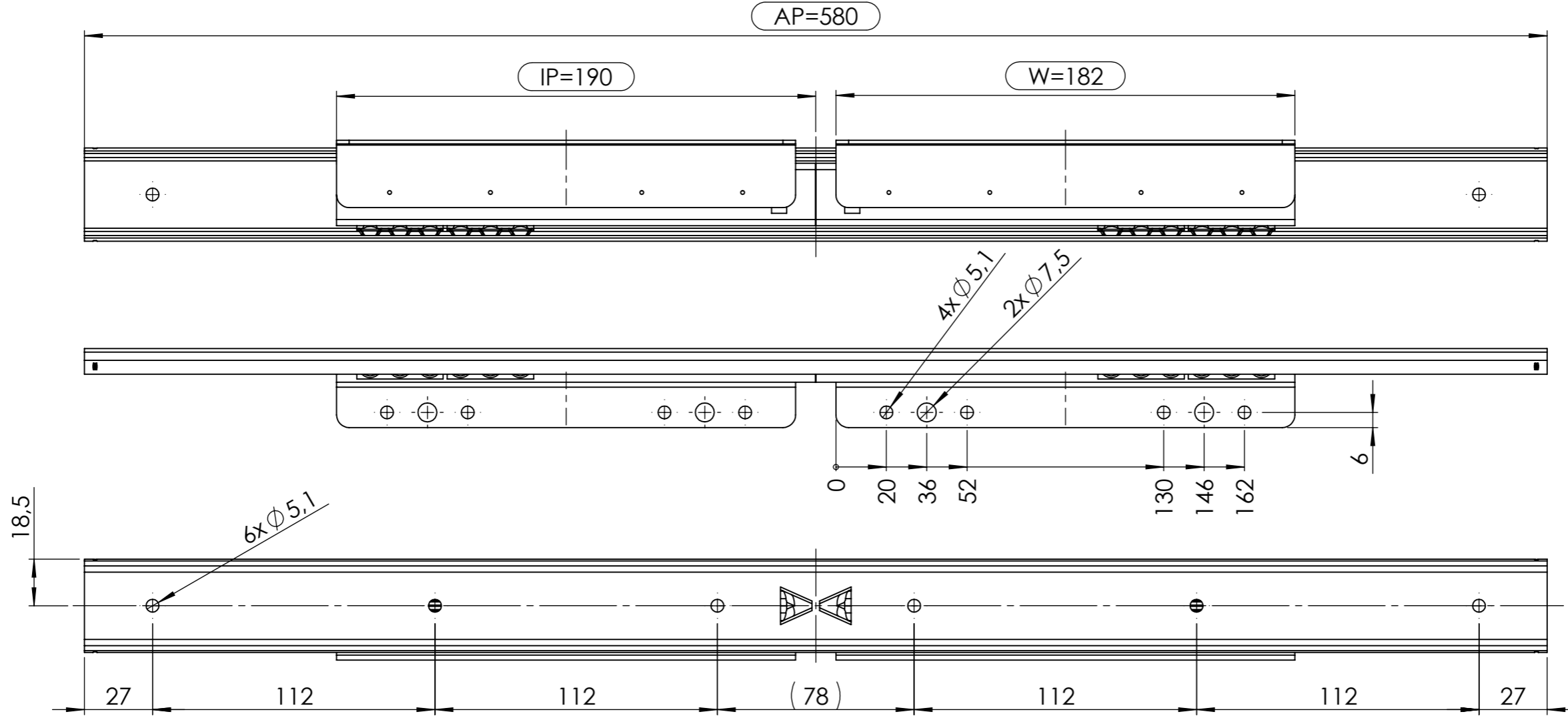
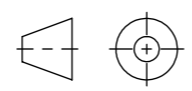



All property rights and rights to exploitation of copyright for this drawing data remain ours; they may not be made available to third parties without our consent.

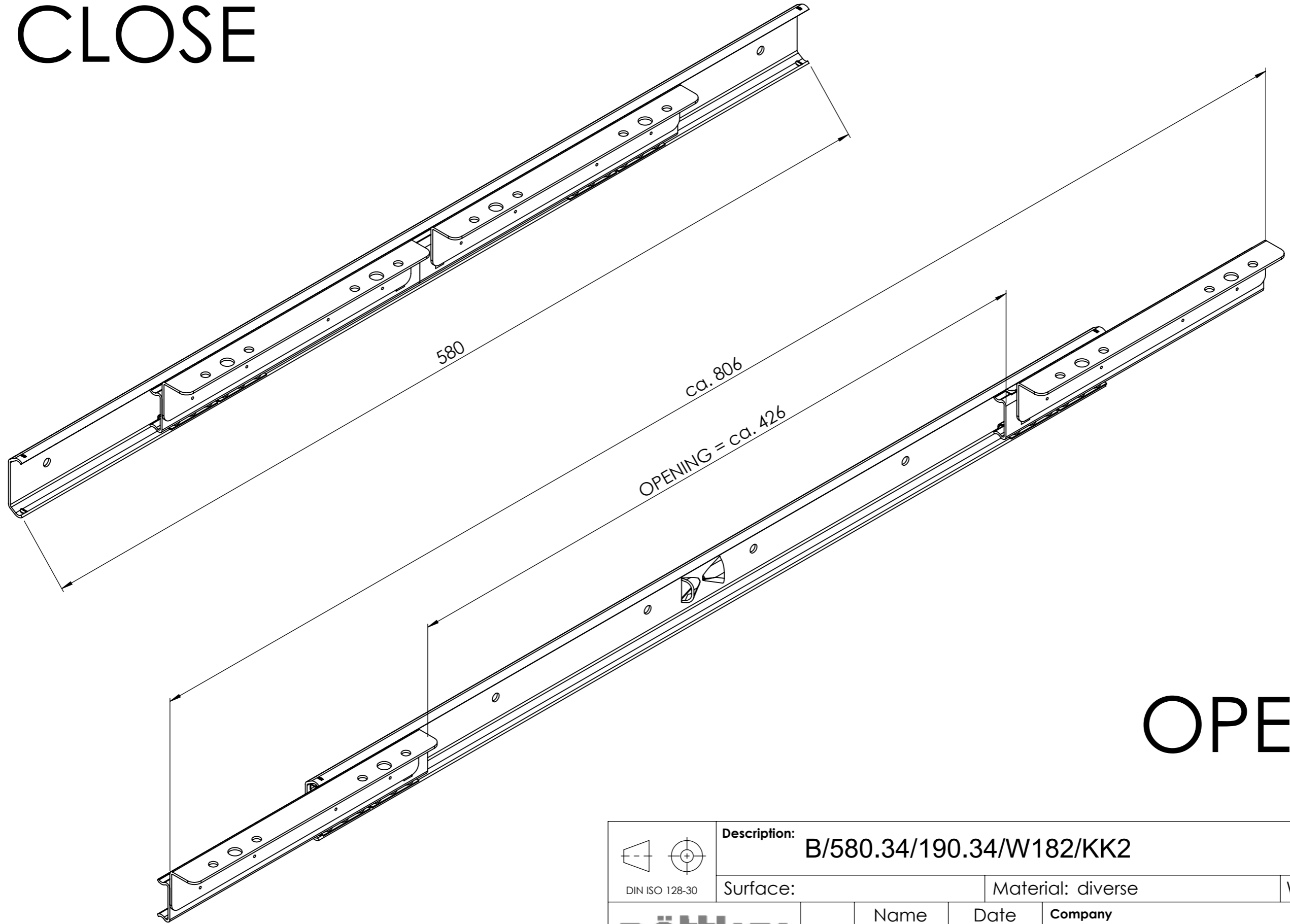


DETAIL A 2 : 1

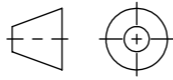
metal ball-retainer: **2** segments  
 opening: ca. **426** mm

Index	Change			Date	Name
 DIN ISO 128-30	Description: <b>B/580.34/190.34/W182/KK2</b>				
	Surface:		Material: diverse		Weight: 0.68 kg
	Name	Date	Company		
	Signed	04.04.13	Second Company:		
General tolerance: DIN ISO 2768 -1		Item No: <b>34058101</b>	Scale 1:2	Page 1/3	<b>A3</b>

# CLOSE



# OPEN

 DIN ISO 128-30	<b>Description:</b> B/580.34/190.34/W182/KK2				
	<b>Surface:</b>		<b>Material:</b> diverse		<b>Weight:</b> 0.68 kg
	<b>Name</b>	<b>Date</b>	<b>Company</b>		
	<b>Signed</b>	04.04.13			
	<b>Tested</b>		Second Company:		
General tolerance: DIN ISO 2768 -1		<b>Item No:</b> 34058101	Scale 1:2	Page 2/3	<b>A3</b>

All property rights and rights to exploitation of copyright for this drawing data remain ours; they may not be made available to third parties without our consent.